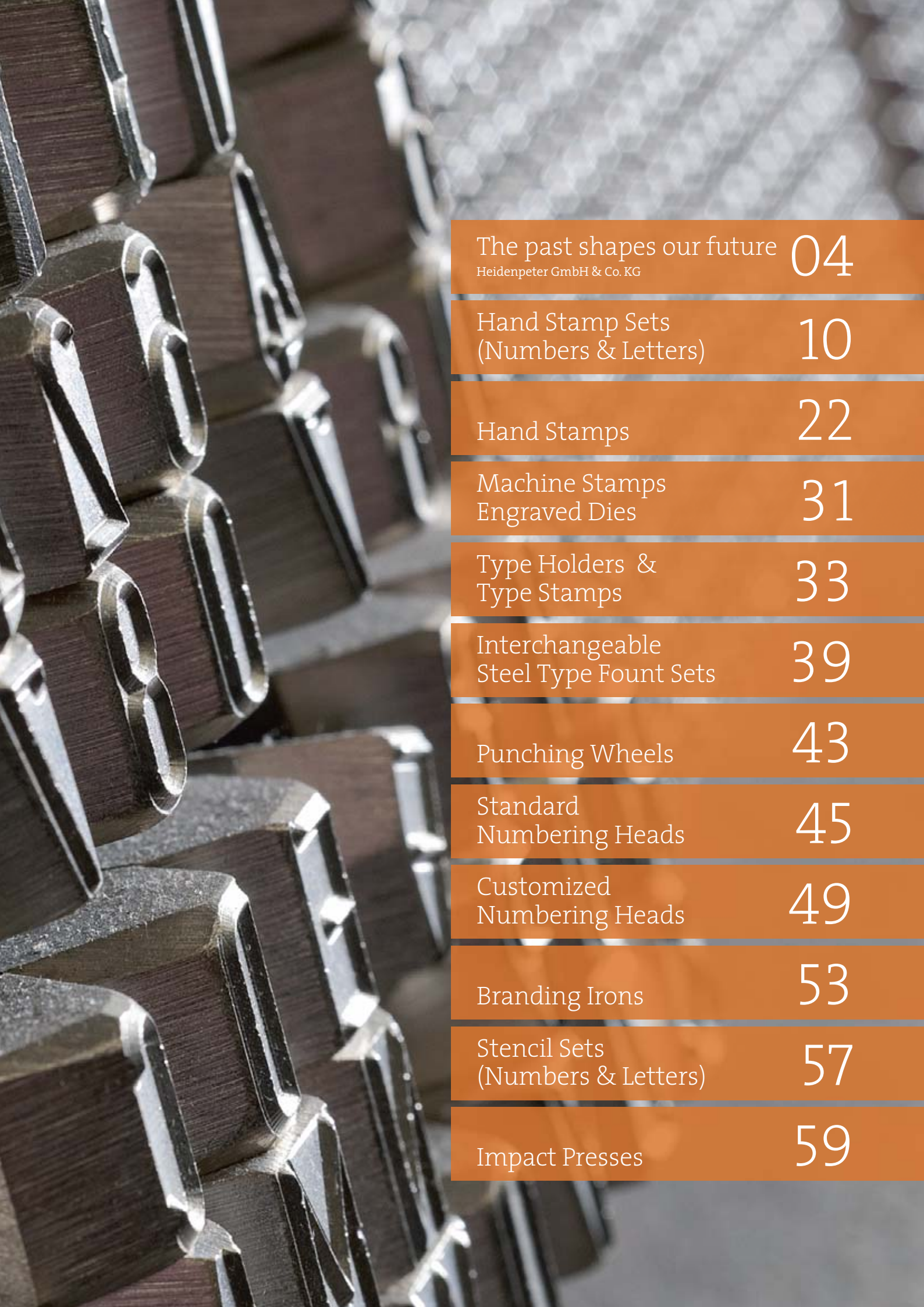




Marks of permanence.







The past shapes our future 04

Heidenpeter GmbH & Co. KG

Hand Stamp Sets  
(Numbers & Letters) 10

Hand Stamps 22

Machine Stamps  
Engraved Dies 31

Type Holders &  
Type Stamps 33

Interchangeable  
Steel Type Fount Sets 39

Punching Wheels 43

Standard  
Numbering Heads 45

Customized  
Numbering Heads 49

Branding Irons 53

Stencil Sets  
(Numbers & Letters) 57

Impact Presses 59



**For generations, our family business has featured  
“Made in Germany” quality.**

## The past shapes our future.

Many years of experience, the highest precision and mechanisation, and consistently high quality have made Heidenpeter GmbH & Co. KG one of the leading companies. Since 1932, our steel stamps and marking tools with the “Made in Germany” label have been a global success. As a unique company, Heidenpeter now mass produces punch sets according to DIN 7353.

The use of modern technology ensures a strong presence in the German and international market and promotes cooperation with successful importers and exporters. The trademarks “GRAVUREM” and “MASUS” have a high reputation, particularly in the Far East. Modern logistics and storage ensure the immediate availability of almost all products.

Heidenpeter GmbH & Co. KG combines the tradition and sustainability of a family business with innovation, customer orientation, and uncompromising quality. For over 80 years.



**High-end steel stamps and marking tools from HEIDENPETER.  
Building the future.**

# Marks of permanence.

The application areas of Heidenpeter products are highly diverse. Steel stamps and marking tools have proven to be sustainable, especially in the automobile and mould/tool making industries. Heidenpeter branding irons are perfectly suited for branding labels e.g. on Euro-pallets. And there are always new possibilities of application: in any area where the durability and accuracy of transmitted messages are still the measure of all things, Heidenpeter products find an application.

The clear typography of the characters, memorable pictograms, high accuracy, and long life distinguish Heidenpeter's quality "Made in Germany" steel stamps and marking tools with which you can permanently leave your mark.





**The highest demands of our clients  
are matched only by our own.**

## Impressive quality.

The signs of the times are clear: the name Heidenpeter GmbH & Co. KG stands for a balanced interplay between transparency, economy, and innovation and guarantees all stakeholders a common and positive future.

*“We are inspired by our clients. They tell us about their plans and ideas. Together, we develop a common goal. Fair, open, and predictable.”*

Regardless of whether it is a standard product from our extensive range or part of an individual project to solve a difficult task – as a trusted partner of the industry, Heidenpeter GmbH & Co. KG builds on a highly qualified and dedicated team of employees, who make the demands of their clients “a personal priority”.



## Hand Stamp Sets (Numbers & Letters)

Hand stamps are stamps made from high-quality tool steel with which single digits or letters can be engraved on different materials e.g. steel, iron or aluminium using a hammer. The generally elongated stamps with a square cross-section have characters on one side which are to be engraved in a raised and sharp design. The impact head on the opposite side is either thermally untreated or it is hardened and tempered. Hand stamps are usually delivered in sets, exclusively with digits or with letters. The punching number sets consist of 9 single stamps since “6” is additionally used as “9” as well. Punching letter sets consist of 27 single stamps because the “&” sign is added to the 26 letters of the alphabet (for lower case letter sets, a “.” full stop).

## GRAVUREM-SR Standard-round

**Article group:** Hand Stamp Sets (Numbers & Letters)

**Line of goods:** Serial-No 010 and 011

- Suitable for the marking of material with a strength of 600-800 N/mm<sup>2</sup>
- Manufactured from bright drawn tool steel in silky-dulled design
- Type of characters acc. to DIN 1451 (middle)
- Hardness at the engraving: 58–61 HRC
- Without grinded sides at the engraving (no visible edge)
- Each punch is marked with: character, size of character, „Made in Germany“ and the international eye protection symbol
- Packed in strong unbreakable blue plastic boxes

010	Number Punch Set 0–9	9 pcs.	Standard Engraving / Impression Readable
011	Capital Letters A–Z + &-Symbol	27 pcs.	Standard Engraving / Impression Readable

	Size of character	Dimensions	010 number set	011 letter set
020000	2 mm	6 x 6 x 65 mm	150 g	500 g
030000	3 mm	6 x 6 x 65 mm	150 g	500 g
040000	4 mm	7 x 7 x 65 mm	210 g	650 g
050000	5 mm	8 x 8 x 65 mm	300 g	850 g
060000	6 mm	9 x 9 x 75 mm	420 g	1250 g
070000	7 mm	11 x 11 x 76 mm	650 g	1950 g
080000	8 mm	11 x 11 x 76 mm	650 g	1950 g
100000	10 mm	12 x 12 x 80 mm	820 g	2450 g



## GRAVUREM-S Standard

Article group: Hand Stamp Sets (Numbers & Letters)

Line of goods: Serial-No 100 to 104

- Suitable for the marking of material with a strength of 600-800 N/mm<sup>2</sup>
- Manufactured from bright drawn tool steel in silky-dulled design
- Type of characters acc. to DIN 1451
- Hardness at the engraving: 58–61 HRC
- Grinded sides at the engraving (visible edge)
- Each punch is marked with: character, size of character,  
„Made in Germany“ and the international eye protection symbol
- Packed in strong unbreakable blue plastic boxes

1 0 0	Number Punch Set 0–9	9 pcs.	Standard Engraving / Impression Readable
1 0 1	Capital Letters A–Z + &-Symbol	27 pcs.	Standard Engraving / Impression Readable
1 0 2	Lower Case Letters a–z + . (Full-Stop)	27 pcs.	Standard Engraving / Impression Readable
1 0 3	Number Punch Set 0–9	9 pcs.	Reverse Engraving / Impression Mirror-Inverted
1 0 4	Capital Letters A–Z + &-Symbol	27 pcs.	Reverse Engraving / Impression Mirror-Inverted

	Size of character	Dimensions	∅ <sup>1</sup> number set	∅ <sup>2</sup> letter set
0 1 0 0 0	1 mm	6 x 6 x 65 mm	150 g	500 g
0 1 5 0 0	1,5 mm	6 x 6 x 65 mm	150 g	500 g
0 2 0 0 0	2 mm	6 x 6 x 65 mm	150 g	500 g
0 2 5 0 0	2,5 mm	6 x 6 x 65 mm	150 g	500 g
0 3 0 0 0	3 mm	6 x 6 x 65 mm	150 g	500 g
0 4 0 0 0	4 mm	7 x 7 x 65 mm	200 g	600 g
0 5 0 0 0	5 mm	8 x 8 x 65 mm	300 g	800 g
0 6 0 0 0	6 mm	9 x 9 x 75 mm	400 g	1200 g
0 7 0 0 0	7 mm	11 x 11 x 76 mm	600 g	1850 g
0 8 0 0 0	8 mm	11 x 11 x 76 mm	600 g	1850 g
0 9 0 0 0	9 mm	12 x 12 x 80 mm	800 g <sup>1</sup>	2300 g <sup>2</sup>
1 0 0 0 0	10 mm	12 x 12 x 80 mm	800 g	2300 g
1 1 0 0 0	11 mm	14 x 14 x 80 mm	1100 g <sup>1</sup>	3100 g <sup>2</sup>
1 2 0 0 0	12 mm	14 x 14 x 80 mm	1100 g	3100 g
1 4 0 0 0	14 mm	16 x 16 x 85 mm	1500 g <sup>1</sup>	4300 g <sup>2</sup>
1 5 0 0 0	15 mm	16 x 16 x 85 mm	1500 g	4300 g

<sup>1</sup>Not available as number punch set (reverse engraving).

<sup>2</sup>Not available with small letters (standard engraving) and capital letters (reverse engraving).



## GRAVUREM-No. 1 extra-extra

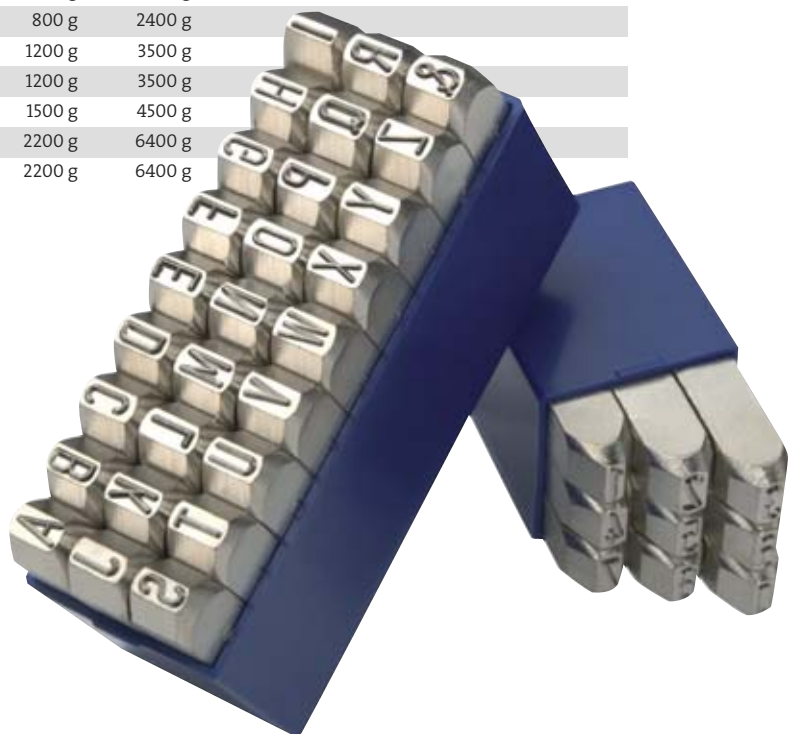
**Article group:** Hand Stamp Sets (Numbers & Letters)

**Line of goods:** Serial-No 110 and 111

- Suitable for the marking of material with a strength of 1200 N/mm<sup>2</sup>
- Especially recommended for the marking of stainless steel / Protection against contamination with steel parts by nickel-plated surface
- Type of characters acc. to DIN 1451
- Hardness at the engraving: 58–61 HRC
- Grinded sides at the engraving (visible edge)
- Each punch is marked with: character, size of character, „Made in Germany“ and the international eye protection symbol
- Packed in strong unbreakable blue plastic boxes

1 1 0	Number Punch Set 0–9	9 pcs.	Standard Engraving / Impression Readable
1 1 1	Capital Letters A–Z + &-Symbol	27 pcs.	Standard Engraving / Impression Readable

	Size of character	Dimensions	☞ number set	☞ letter set
0 2 0 0 0	2 mm	7 x 7 x 75 mm	250 g	750 g
0 3 0 0 0	3 mm	8 x 8 x 75 mm	300 g	1000 g
0 4 0 0 0	4 mm	9 x 9 x 80 mm	450 g	1300 g
0 5 0 0 0	5 mm	10 x 10 x 80 mm	550 g	1600 g
0 6 0 0 0	6 mm	12 x 12 x 85 mm	800 g	2400 g
0 7 0 0 0	7 mm	14 x 14 x 90 mm	1200 g	3500 g
0 8 0 0 0	8 mm	14 x 14 x 90 mm	1200 g	3500 g
1 0 0 0 0	10 mm	16 x 16 x 90 mm	1500 g	4500 g
1 2 0 0 0	12 mm	18 x 18 x 100 mm	2200 g	6400 g
1 5 0 0 0	15 mm	18 x 18 x 100 mm	2200 g	6400 g



## GRAVUREM-SPECIAL

Article group: Hand Stamp Sets (Numbers & Letters)

Line of goods: Serial-No 120 to 124

- Hardened and tempered stamping heads for highest demands
- Manufactured acc. to DIN 7353
- Type of characters acc. to DIN 1451 (narrow)
- Hardness at the engraving: 58–61 HRC
- Grinded sides at the engraving (visible edge)
- Each punch is marked with: character, size of character, „SCHLAGKOPFVERGÜTET“ and the international eye protection symbol
- Packed in strong unbreakable blue plastic boxes

1 2 0	Number Punch Set 0–9	9 pcs.	Standard Engraving / Impression Readable
1 2 1	Capital Letters A–Z + &-Symbol	27 pcs.	Standard Engraving / Impression Readable
1 2 2	Lower Case Letters a–z + . (Full-Stop)	27 pcs.	Standard Engraving / Impression Readable
1 2 3	Number Punch Set 0–9	9 pcs.	Reverse Engraving / Impression Mirror-Inverted
1 2 4	Capital Letters A–Z + &-Symbol	27 pcs.	Reverse Engraving / Impression Mirror-Inverted

	Size of character	Dimensions	∅ number set	∅ letter set
0 1 0 0 0	1 mm	7 x 7 x 75 mm	250 g	750 g
0 1 5 0 0	1,5 mm	7 x 7 x 75 mm	250 g	750 g
0 2 0 0 0	2 mm	7 x 7 x 75 mm	250 g	750 g
0 2 5 0 0	2,5 mm	7 x 7 x 75 mm	250 g	750 g
0 3 0 0 0	3 mm	8 x 8 x 75 mm	300 g	1000 g
0 4 0 0 0	4 mm	9 x 9 x 80 mm	450 g	1300 g
0 5 0 0 0	5 mm	10 x 10 x 80 mm	550 g	1600 g
0 6 0 0 0	6 mm	12 x 12 x 85 mm	800 g	2400 g
0 7 0 0 0	7 mm	14 x 14 x 90 mm	1200 g	3500 g
0 8 0 0 0	8 mm	14 x 14 x 90 mm	1200 g	3500 g
1 0 0 0 0	10 mm	16 x 16 x 90 mm	1500 g	4500 g
1 2 0 0 0	12 mm	18 x 18 x 100 mm	2200 g	6400 g
1 5 0 0 0	15 mm	18 x 18 x 100 mm	2200 g	6400 g



## GRAVUREM-T

**Article group:** Hand Stamp Sets (Numbers & Letters)

**Line of goods:** Serial-No 130 to 134

- Impression with controlled depth / TESA-Edition
- Manufactured from bright drawn tool steel in silky-dulled design
- Type of characters acc. to DIN 1451 (middle)
- Hardness at the engraving: 58–61 HRC
- Each punch is marked with: character, size of character, „SCHLAGKOPFVERGÜTET“ and the international eye protection symbol
- Packed in strong unbreakable blue plastic boxes

1 3 0	Number Punch Set 0–9	9 pcs.	Standard Engraving / Impression Readable
1 3 1	Capital Letters A–Z + &-Symbol	27 pcs.	Standard Engraving / Impression Readable
1 3 3	Number Punch Set 0–9	9 pcs.	Reverse Engraving / Impression Mirror-Inverted
1 3 4	Capital Letters A–Z + &-Symbol	27 pcs.	Reverse Engraving / Impression Mirror-Inverted

	Size of character	Dimensions	☞ number set	☞ letter set
0 1 0 0 0	1 mm	7 x 7 x 75 mm	250 g	750 g
0 1 5 0 0	1,5 mm	7 x 7 x 75 mm	250 g	750 g
0 2 0 0 0	2 mm	7 x 7 x 75 mm	250 g	750 g
0 2 5 0 0	2,5 mm	7 x 7 x 75 mm	250 g	750 g
0 3 0 0 0	3 mm	8 x 8 x 75 mm	300 g	1000 g
0 4 0 0 0	4 mm	8 x 8 x 75 mm	300 g	1000 g
0 5 0 0 0	5 mm	9 x 9 x 80 mm	450 g	1300 g
0 6 0 0 0	6 mm	11 x 11 x 76 mm	600 g	1900 g
0 8 0 0 0	8 mm	12 x 12 x 85 mm	800 g	2400 g
1 0 0 0 0	10 mm	14 x 14 x 90 mm	1200 g	3600 g



## GRAVUREM-R

**Article group:** Hand Stamp Sets (Numbers & Letters)

**Line of goods:** Serial-No 140 and 141

- LOW-STRESS engraving
- No damage or slot punching effect (acc. to ASME-Standard)
- Manufactured from bright drawn tool steel in silky-dulled design
- Type of characters acc. to DIN 1451 (middle)
- Hardness at the engraving: 58–61 HRC
- Each punch is marked with: character, size of character, „SCHLAGKOPFVERGÜTET“ and the international eye protection symbol
- Packed in strong unbreakable blue plastic boxes

1 4 0	Number Punch Set 0–9	9 pcs.	Standard Engraving / Impression Readable
1 4 1	Capital Letters A–Z + &-Symbol	27 pcs.	Standard Engraving / Impression Readable

	Size of character	Dimensions	∅ number set	∅ letter set
0 2 0 0 0	2 mm	7 x 7 x 75 mm	250 g	750 g
0 3 0 0 0	3 mm	8 x 8 x 75 mm	300 g	1000 g
0 4 0 0 0	4 mm	9 x 9 x 80 mm	450 g	1300 g
0 5 0 0 0	5 mm	10 x 10 x 80 mm	550 g	1600 g
0 6 0 0 0	6 mm	12 x 12 x 85 mm	800 g	2400 g
0 8 0 0 0	8 mm	14 x 14 x 90 mm	1200 g	3500 g
1 0 0 0 0	10 mm	16 x 16 x 90 mm	1500 g	4500 g
1 2 0 0 0	12 mm	18 x 18 x 100 mm	2200 g	6400 g



1 2 3 4 5 6 7 8  
 + = 1 2 3 4 5 6 7 8  
 8-digit article number



## GRAVUREM-RP

Article group: Hand Stamp Sets (Numbers & Letters)

Line of goods: Serial-No 143 and 144

- LOW-STRESS DOT-STYLE Engraving
- No damage or slot punching effect (acc. to ASME-Standard)
- Manufactured from bright drawn tool steel in silky-dulled design
- Type of characters acc. to DIN 1451 (middle)
- Hardness at the engraving: 58–61 HRC
- Each punch is marked with: character, size of character, „SCHLAGKOPFVERGÜTET“ and the international eye protection symbol
- Packed in strong unbreakable blue plastic boxes

1 4 3	Number Punch Set 0–9	9 pcs.	Standard Engraving / Impression Readable
1 4 4	Capital Letters A–Z + &-Symbol	27 pcs.	Standard Engraving / Impression Readable

	Size of character	Dimensions	🇩🇪 number set	🇩🇪 letter set
0 2 0 0 0 0	2 mm	7 x 7 x 75 mm	250 g	750 g
0 3 0 0 0 0	3 mm	8 x 8 x 75 mm	300 g	1000 g
0 4 0 0 0 0	4 mm	9 x 9 x 80 mm	450 g	1300 g
0 5 0 0 0 0	5 mm	10 x 10 x 80 mm	550 g	1600 g
0 6 0 0 0 0	6 mm	12 x 12 x 85 mm	800 g	2400 g
0 8 0 0 0 0	8 mm	14 x 14 x 90 mm	1200 g	3500 g
1 0 0 0 0 0	10 mm	16 x 16 x 90 mm	1500 g	4500 g
1 2 0 0 0 0	12 mm	18 x 18 x 100 mm	2200 g	6400 g



Sharp engraving



Low-stress engraving



8-digit article number





## OVERSIZES

**Article group:** Hand Stamp Sets (Numbers & Letters)

**Line of goods:** Serial-No 300 and 301

- Oversized steel hand stamp sets as serial product
- CNC engraving for highest precision
- Manufactured from bright drawn tool steel in silky-dulled design
- Type of characters acc. to DIN 1451 (narrow)
- Hardness at the engraving: 58–61 HRC
- No marks on the shank
- Packed in strong unbreakable blue plastic boxes

3 0 0	Number Punch Set 0–9	9 pcs.	Standard Engraving / Impression Readable
3 0 1	Capital Letters A–Z + &-Symbol	27 pcs.	Standard Engraving / Impression Readable

	Size of character	Dimensions	∅ number set	∅ letter set
1 8 0 0 0	18 mm	15 x 25 x 100 mm	2500 g	7300 g
2 0 0 0 0	20 mm	15 x 25 x 100 mm	2500 g	7300 g
2 5 0 0 0	25 mm	15 x 30 x 100 mm	3300 g	9500 g

1 2 3 4 5 6 7 8  
 + = 1 2 3 4 5 6 7 8  
 4 5 6 7 8  
 8-digit article number

## GRAVUREM-EXTREME

**Article group:** Hand Stamp Sets (Numbers & Letters)

**Line of goods:** Serial-No 330 and 331

- Manufactured from special high-performance tool steel 1.2842 (90 Mn Cr V 8)
- Extraordinary toughness and stability
- CNC engraving for highest precision
- Sandblasted in silky-dulled design
- Type of characters acc. to DIN 1451
- Hardness at the engraving: 58–61 HRC
- Each punch is marked with: character, size of character,  
„Made in Germany“ and the international eye protection symbol
- Packed in strong unbreakable blue plastic boxes

3 3 0	Number Punch Set 0–9	9 pcs.	Standard Engraving / Impression Readable
3 3 1	Capital Letters A–Z	26 pcs.	Standard Engraving / Impression Readable

	Size of character	Dimensions	☞ number set	☞ letter set
0 2 0 0 0 0	2 mm	10 x 10 x 80 mm	600 g	1800 g
0 3 0 0 0 0	3 mm	10 x 10 x 80 mm	600 g	1800 g
0 4 0 0 0 0	4 mm	10 x 10 x 80 mm	600 g	1800 g
0 5 0 0 0 0	5 mm	12 x 12 x 85 mm	800 g	2400 g
0 6 0 0 0 0	6 mm	12 x 12 x 85 mm	800 g	2400 g
0 8 0 0 0 0	8 mm	15 x 15 x 90 mm	1300 g	3800 g
1 0 0 0 0 0	10 mm	16 x 16 x 95 mm	1600 g	4600 g
1 2 0 0 0 0	12 mm	20 x 20 x 105 mm	2800 g	8200 g



# Hand Stamps

In addition to number and letter punch sets, hand stamps can also be manufactured with a fixed multi-digit engraving as per customer's request. A classic application of hand stamps is the embossing of serial numbers on the individual components of machines or vehicles. Usually with the help of a punch stamp, a symbol (e.g. a star), the logo of a manufacturer or variable manufacture data are embossed on products. Graved numbers and nomenclatures are forgery-proof and more reliable than printed name plates and labels. For manufacturing individual hand stamps, different fonts are possible and logos and motifs can be realized according to a sample, sketch or data template. The diversity and creativity is virtually endless and thus the range of application extends far beyond the pure technical labelling into the creative and artistic design of jewellery, leather and wood.

## Multi-Digit Hand Stamps

**Article group:** Hand Stamps

**Line of goods:** acc.to DIN 1451 / Serial-No 150

- CNC engraving for highest precision
- Combinations of numbers, letters and/or punctuation marks are possible
- Type of characters acc. to DIN 1451
- Hardness at the engraving: 58–61 HRC
- Grinded at all sides close to the engraving

Size of character	Width of Impression (mm)									
	1-digit	2-digit	3-digit	4-digit	5-digit	6-digit	7-digit	8-digit	9-digit	10-digit
2 mm	1,2	3,3	5,3	7,3	9,3	11,3	13,3	15,3	17,3	19,3
3 mm	1,5	5	8	11	14	17	20	23	26	29
4 mm	2	5,1	8,4	11,6	14,9	18,2	21,5	24,8	28,1	31,4
5 mm	2,5	6,3	10,3	14,3	18,3	22,3	24,3	28,3	32,3	36,3
6 mm	3	6	10	14	18	22,5	26	31	36	40
8 mm	3	8	13	18,5	24	30	34,5	41	47,5	52,5
10 mm	3,4	10	17	24	30	37,5	43	52	59,5	66

\* All data are reference values and may deviate in individual cases.

As standard version all hand stamps have a one-line sharp faced engraving and the impression is readable. The following special versions of engraving are possible:

- Multiline Engraving
- Special Typefaces
- Reverse Engraving / Impression Mirror-Inverted
- Outline Engraving
- Flat Faced Engraving
- Engraving in a radius (concave / convex)
- LOW-STRESS Engraving
- LOW-STRESS DOT-STYLE Engraving

The manufacturing of hand stamps with individual logos and symbols is also possible. For this purpose we require a sample, a sketch or a drawing. It can certainly be provided as a file.



## Control Stamps / Inspection Stamps

Article group: Hand Stamps

Line of goods: Serial-No 151

- Quality and product specifications identical with multi-digit hand stamps
- Individual marking and identification by simple symbols



### Proposals:

	1	2	3	4	5	6	7	8	9	10
A	+	⊗	⊕	☾	◊	⊙	⊠	⊞	⊔	⊚
B	⊠	⊙	⊚	⊞	⊠	⊞	⊞	⊞	⊞	⊞
C	⊞	⊞	⊞	⊞	⊞	⊞	⊞	⊞	⊞	⊞
D	⊞	⊞	⊞	⊞	⊞	⊞	⊞	⊞	⊞	⊞
E	⊞	⊞	⊞	⊞	⊞	⊞	⊞	⊞	⊞	⊞
F	⊞	⊞	⊞	⊞	⊞	⊞	⊞	⊞	⊞	⊞

	Height of Impression	Dimensions
15102000	2 mm	10 x 10 x 80 mm
15103000	3 mm	10 x 10 x 80 mm
15104000	4 mm	10 x 10 x 80 mm
15105000	5 mm	12 x 12 x 85 mm
15106000	6 mm	12 x 12 x 85 mm
15107000	7 mm	14 x 14 x 90 mm
15108000	8 mm	14 x 14 x 90 mm
15110000	10 mm	16 x 16 x 95 mm
15112000	12 mm	18 x 18 x 100 mm
15115000	15 mm	20 x 20 x 105 mm

\* The dimensions are reference values and may deviate in individual cases.

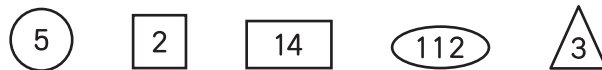


## Welder's Control Stamps

Article group: Hand Stamps

Line of goods: Serial-No 152

- Quality and product specifications identical with multi-digit hand stamps
- For marking and signing of welding work for the purpose of traceability and control
- Individual combinations of letters and/or numbers with a border
- The border is engraved in round, oval, square, rectangular or triangular shape
- Size of character and impression acc. to your requirements



	Size of character	Size of Border □○△	Size of Border ○
1 5 2 0 2 0 0 1	2 mm/1-digit	5 mm	8 x 5 mm
1 5 2 0 2 0 0 2	2 mm/2-digit	5 mm	8 x 5 mm
1 5 2 0 2 0 0 3	2 mm/3-digit	5 mm	8 x 5 mm
1 5 2 0 3 0 0 1	3 mm/1-digit	6-7 mm	12 x 6 mm
1 5 2 0 3 0 0 2	3 mm/2-digit	6-7 mm	12 x 6 mm
1 5 2 0 3 0 0 3	3 mm/3-digit	6-7 mm	12 x 6 mm
1 5 2 0 4 0 0 1	4 mm/1-digit	8 mm	12 x 8 mm
1 5 2 0 4 0 0 2	4 mm/2-digit	8 mm	12 x 8 mm
1 5 2 0 4 0 0 3	4 mm/3-digit	8 mm	12 x 8 mm
1 5 2 0 5 0 0 1	5 mm/1-digit	8-10 mm	15 x 10 mm
1 5 2 0 5 0 0 2	5 mm/2-digit	8-10 mm	15 x 10 mm
1 5 2 0 5 0 0 3	5 mm/3-digit	8-10 mm	15 x 10 mm
1 5 2 0 6 0 0 1	6 mm/1-digit	10-12 mm	18 x 12 mm
1 5 2 0 6 0 0 2	6 mm/2-digit	10-12 mm	18 x 12 mm
1 5 2 0 6 0 0 3	6 mm/3-digit	10-12 mm	18 x 12 mm
1 5 2 0 7 0 0 1	7 mm/1-digit	10-14 mm	20 x 15 mm
1 5 2 0 7 0 0 2	7 mm/2-digit	10-14 mm	20 x 15 mm
1 5 2 0 7 0 0 3	7 mm/3-digit	10-14 mm	20 x 15 mm
1 5 2 0 8 0 0 1	8 mm/1-digit	12-16 mm	20 x 15 mm
1 5 2 0 8 0 0 2	8 mm/2-digit	12-16 mm	20 x 15 mm
1 5 2 0 8 0 0 3	8 mm/3-digit	12-16 mm	20 x 15 mm
1 5 2 1 0 0 0 1	10 mm/1-digit	18-20 mm	25 x 15 mm
1 5 2 1 0 0 0 2	10 mm/2-digit	18-20 mm	25 x 15 mm
1 5 2 1 0 0 0 3	10 mm/3-digit	18-20 mm	25 x 15 mm

\*The sizes of the border are reference values and may deviate in individual cases.



## Star Punches

Article group: Hand Stamps

Line of goods: Serial-No 153

- Hand stamps for the limitation of serial numbers and other information on rating plates.
- 6-arms or 5-corners shape

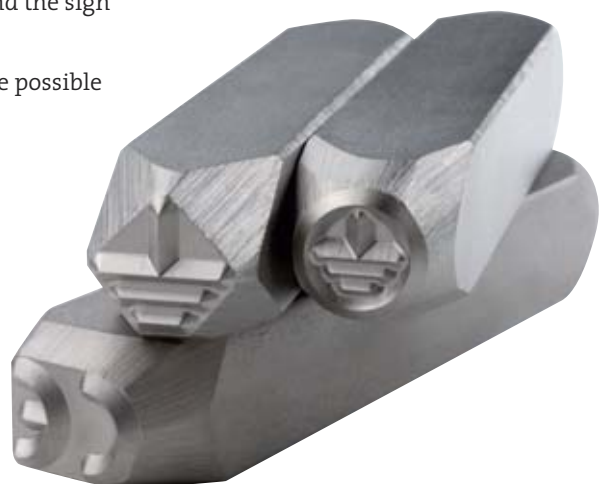


## Standardized Special Symbols

Article group: Hand Stamps

Line of goods: Serial-No 154

- Hand stamps with special symbols acc. to technical and international standards
- CE-logo, earthing symbol and the sign for protective earth
- Outline or flat engraving are possible on demand



## Hand Stamps with Handguard

Article group: Hand Stamps

Line of goods: Serial-No 155

- Firmly mounted handguard made of plastic with handle and large protection area
- Ensures a safe and comfortable holding of the punch and avoids injuries by slipping of the stamping head or failures
- Available for all hand stamps with a max. cross section of (15x15) mm



## Assay Punches / Hallmarking Punches

Article group: Hand Stamps

Line of goods: Serial-No 156

- Straight or cranked punches (Swan Neck)
- Available with the usual degrees of fineness in 0,5 mm, 0,75 mm and 1,0 mm size of character
- Engraving in a radius (convex) for a marking on the inside of rings upon request
- Raised or recessed engraving
- Individual signatures, logos or brands can be offered upon request



## Punch Grip

Article group: Hand Stamps

Line of goods: Serial-No 749

- Allows a safe distance between the stamping head and the hand of the worker
- Avoids injuries by slipping of the stamping head or failures
- Simple plastic grip with holding device
- The fitted punch gets clamped by turning the setting wheel on the backside of the grip
- Suitable for all hand stamps with a max. cross section of 20 x 20 mm



## Safety Grip

**Article group:** Hand Stamps

**Line of goods:** Serial-No 750

- Allows a safe distance between the stamping head and the hand of the worker
- Avoids injuries by slipping of the stamping head or failures
- Strong and durable metal construction for the heavy-duty industrial use
- Quick-change device with spring-locking
- Suitable for all hand stamps with a max. cross section of 20 x 20 mm





Tradition of  
over 80 years

[www.heidnpeter.de](http://www.heidnpeter.de)

# Machine Stamps / Engraved Dies

Machine stamps made from steel are integrated in presses, devices or tools and used for marking of work-pieces to meet individual requirements or guidelines. They are present in almost infinite variety with totally different and purpose-oriented characteristics. Whether as a press die for integration into manual, pneumatic or hydraulic presses, as steel types for the use in corresponding type holders, as roll-on stamps with segment types, wheel stamps for lathe or double embossing stamp for metal sheet marking: The variety of possibilities is nearly unlimited! The manufacture of the machine stamps that you require takes place exactly according to your guidelines (sketch, sample or drawing). They are manufactured from all the commonly used materials and special steel, which provides high durability and strength, including heat treatment.

## GRAVUREM-Machine Stamps / Engraved Dies

**Article group:** Machine Stamps / Engraved Dies

**Line of goods:** Serial-No 500





Quality Products  
„Made in Germany“

[www.heidenpeter.de](http://www.heidenpeter.de)



# Type Holders and Type Stamps

Type holders along with the associated type stamps in principle fulfil the same function as the multi-digit hand stamps. Through the exchange of single numbers or letters, you can allow the marking of variable lettering and at the same time, the individual digits are accurately positioned. The fixing of the types within the holder takes place with the help of a grub screw or a locking pin. Type holders are available in different designs and can be equipped for the manual marking with the help of a hammer in the same way as for the integration in a press or a device.

## Hand-Held Type Holder, Light Version

**Article group:** Type Holders & Type Stamps

**Line of goods:** Type Holder, Light Version / Serial-No 160

- Body incl. handle milled from the solid
- Types are secured in place by means of a grub screw at the side of the holder
- Hardened supporting surface in the slot
- Tempered striking handle
- Nickel-plated version (rust-protected)
- Also available in multiline version



## Interchangeable Steel Types

**Article group:** Type Holders & Type Stamps

**Line of goods:** Steel Types Standard or European Norm / Serial-No 161

- Manufactured from special high-performance tool steel
- Type of characters acc. to DIN 1451
- Hardness at the engraving: 58–61 HRC
- Dimensions acc. to Standard or European Norm
- Also available with nickel-plated surface (rust protected)
- Blank spacers can be supplied

Dimensions (incl. Engraving):

Size of character	Standard Norm	European Norm
2 mm	2 x 4 x 15 mm	2 x 4 x 19 mm
3 mm	3 x 6 x 20 mm	3 x 6 x 19 mm
4 mm	3 x 6 x 20 mm	4 x 8 x 19 mm
5 mm	4 x 8 x 25 mm	5 x 8 x 19 mm
6 mm	4 x 8 x 25 mm	6 x 10 x 19 mm
8 mm	5 x 10 x 25 mm	8 x 12 x 19 mm
10 mm	6 x 12 x 30 mm	10 x 14 x 19 mm
12 mm	8 x 15 x 30 mm	–
15 mm	10 x 20 x 30 mm	–



## Machine Holders

**Article group:** Type Holders & Type Stamps

**Line of goods:** Machine Holders / Serial-No 168

- For use in presses, machines or devices
- Incl. shank or threaded holes for the installation
- Types are secured in place by means of a grub screw at the side of the holder
- Hardened supporting surface in the slot
- Nickel-plated version (rust-protected)
- Also available in multiline version



## Hand-Held Type Holder, Heavy-Duty Version

Article group: Type Holders & Type Stamps

Line of goods: Type Holder, Heavy-Duty Version / Serial-No 162

- Body incl. handle milled from the solid
- Exchangeable punching-cap
- Types are secured in place by means of a locking-pin inserted at the side of the holder
- Hardened supporting surface in the slot
- Nickel-plated version (rust-protected)



## Steel Types With Guide Slot

**Article group:** Type Holders & Type Stamps

**Line of goods:** Steel Types With Guide Slot / Serial-No 163

- For use in type-holder, heavy-duty version / serial-no. 163
- Manufactured from special high-performance tool steel
- Type of characters acc. to DIN 1451
- Hardness at the engraving: 58–61 HRC
- Also available with nickel-plated surface (rust protected)
- Blank spacers can be supplied

Dimensions (incl. Engraving):

Size of character	Standard Norm
2 mm	3 x 6 x 32 mm
3 mm	3 x 6 x 32 mm
4 mm	4 x 8 x 32 mm
5 mm	4 x 8 x 32 mm
6 mm	5 x 10 x 32 mm
8 mm	5 x 10 x 32 mm
10 mm	6 x 12 x 32 mm
12 mm	8 x 15 x 32 mm
15 mm	10 x 20 x 32 mm





Highest precision  
in serial production

[www.heidenpeter.de](http://www.heidenpeter.de)

# Interchangeable Steel Type Fount Sets

For the different applications of multi-digit markings, our fount sets offer universal basic equipment: Hand held type holder, interchangeable steel types and assembling tools are already contained in a strong practical storage and transport box. The number and sorting of the included digits, letters and punctuation marks are based on the decades of experience as well the internationally recognised standards. Of course additional or spare type stamps are available all the time.

## Standard Fount Set

**Article group:** Interchangeable Steel Type Fount Set

**Line of goods:** Standard Fount Set / Serial-No 164

- Hand held type holder with hardened supporting surface in the slot
- 50 pcs. steel types 0–9 (each 5 pcs.) and 5 blank spacers
- Hexagon key
- Nickel-plated version (rust-protected)
- Assorted in plastic storage box

Size of character	Dimensions of Steel Types	Capacity of Type Holder
3 mm	(3 x 6 x 20) mm	8 Type pieces
4 mm	(3 x 6 x 20) mm	8 Type pieces
5 mm	(4 x 8 x 25) mm	8 Type pieces
6 mm	(4 x 8 x 25) mm	8 Type pieces



## Euro Type Fount Set

**Article group:** Interchangeable Steel Type Fount Set

**Line of goods:** Euro Type Fount Set / Serial-No 165

- Hand held type holder with hardened supporting surface in the slot
- Also available with machine holder for use in presses
- 100 Steel types with numbers, letters and punctuation marks as well as 6 blank spacers
- Hexagon key and tweezers
- Nickel-plated version (rust-protected)
- Assorted in plastic storage and transport box

### Content

A	A	A	B	B	C	C	D	D	E	E	E	E	F	F	G	G	H	H	I
I	I	J	J	K	K	L	L	L	M	M	N	N	N	O	O	O	P	P	Q
R	R	R	S	S	S	T	T	U	U	U	V	V	W	W	X	X	Y	Z	/
/	-	-	.	.	,	,	1	1	1	1	2	2	2	2	3	3	3	4	4
4	4	5	5	5	6	6	6	7	7	7	8	8	8	9	9	9	0	0	0

**Additional the Euro Type Fount Set contains 6 blank spacers!**

Size of character	Dimensions of Steel Types	Capacity of Type Holder
1 mm	(1,5 x 4,0 x 19,0) mm	19 Type pieces
1,5 mm	(1,5 x 4,0 x 19,0) mm	19 Type pieces
2 mm	(2,0 x 4,0 x 19,0) mm	14 Type pieces
2,5 mm	(2,5 x 6,0 x 19,0) mm	15 Type pieces
3 mm	(3,0 x 6,0 x 19,0) mm	13 Type pieces
4 mm	(4,0 x 8,0 x 19,0) mm	10 Type pieces
5 mm	(5,0 x 8,0 x 19,0) mm	8 Type pieces





The perfect choice  
for your demands

[www.heidenpeter.de](http://www.heidenpeter.de)



# Punching Wheels

As an alternative to the hand stamp set, punching wheels are ideal for location-independent and mobile use. All digits and letters are present in their particular font sizes on only a single respectively three tools. By simply rotating it, the desired engraving will be found quickly and can be positioned on the work-piece. The central hole allows the fitting of an extended support handle, which provides more safety during the embossing process.

## Punching Wheel 0–9

**Article group:** Punching Wheels  
**Line of goods:** Punching Wheel 0–9 / Serial-No 170

- Manufactured from special high-performance tool steel
- Type of characters acc. to DIN 1451
- Hardness at the engraving: 58–61 HRC
- Nickel-plated version (rust-protected)
- Hardened and tempered striking surface
- Each wheel is marked with the size of character and the characters on the stamping and the striking side



## Punching Wheel A–Z,&

**Article group:** Punching Wheels  
**Line of goods:** Punching Wheel A–Z,& / Serial-No 171

- Set consisting of 3 punching wheels
- Technical details as punching wheel 0–9





Sustainable quality  
with experience

[www.heidnpeter.de](http://www.heidnpeter.de)

# Standard Numbering Heads

Numbering heads are faster and more convenient to handle than type holders. They also allow the marking of multi-digit combination of numbers in a single operation and at the same time, the orientation of the single digits is accurate. By rotating the wheels, which are secured in place by means of a locking-pin, the desired number can be set quickly and without any problem. Every single wheel has a 11-part engraving and is equipped with the digits 0–9 and a blank space.

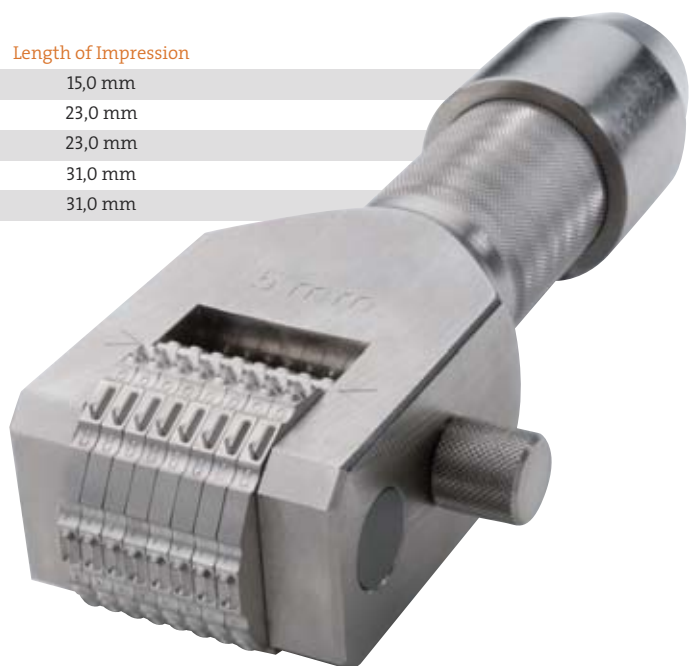
## Maxi Marker

**Article group:** Standard Numbering Heads

**Line of goods:** Maxi Marker / Serial-No 185

- Heavy robust design
- Exchangeable punching-cap
- Display of settings by tell-tale characters in the wheel grooves, indicated by arrows
- All components internally standardised and separately available
- Manufactured from special high-performance tool steel
- Type of characters acc. to DIN 1451
- Hardness at the engraving: 58–61 HRC
- Nickel-plated version (rust-protected)

Size of character	Number of Wheels	Wheel Width	Length of Impression
2 mm	8	2 mm	15,0 mm
3 mm	8	3 mm	23,0 mm
4 mm	8	3 mm	23,0 mm
5 mm	8	4 mm	31,0 mm
6 mm	8	4 mm	31,0 mm



## Compact Marker

**Article group:** Standard Numbering Heads

**Line of goods:** Compact Marker / Serial-No 180

- Space-saving compact design
- Striking handle can be replaced by shank
- Display of settings by tell-tale characters in the wheel grooves
- All components internally standardised and seperately available
- Manufactured from special high-performance tool steel
- Type of characters acc. to DIN 1451
- Hardness at the engraving: 58–61 HRC
- Nickel-plated version (rust-protected)

Size of character	Number of Wheels	Wheel Width	Length of Impression
2 mm	6	2 mm	11,0 mm
3 mm	6	3 mm	16,5 mm
4 mm	6	3 mm	17,0 mm
5 mm	6	4 mm	23,0 mm
6 mm	6	4 mm	23,0 mm







Extensive know-how  
for highest reliability

[www.heidenpeter.de](http://www.heidenpeter.de)



# Customized Numbering Heads

In addition to the stamping of multi-digit numbers as a classic application for numbering heads, there are a wide range of applications that require individual solutions and adjustments. Whether the desired marking should now contain letters as well, a special desired font size is required, the operation through spring lock of the wheel should become even more convenient or automatic switch-over is necessary: we deliver you the numbering head that you require!

## Numbering Head (Pin-Locking)

**Article group:** Customized Numbering Heads  
**Line of goods:** Numbering Head (Pin-Locking) / Serial-No 190

- Heavy robust design
- Exchangeable punching-cap
- Also available with shank for use in presses, machines or devices
- Wheels are secured in place by means of a locking-pin
- 11 positions per wheel / engravings acc. to specification
- Display of settings by tell-tale characters in the wheel grooves, indicated by arrows
- All components internally standardised and separately available
- Manufactured from special high-performance tool steel
- Type of characters acc. to DIN 1451
- Hardness at the engraving: 58–61 HRC
- Nickel-plated version (rust-protected)



Size of character	Wheel Width	Length of impression (mm)							
		3 Wheels	4 Wheels	5 Wheels	6 Wheels	7 Wheels	8 Wheels	9 Wheels	10 Wheels
2 mm	2 mm	5	7	9	11	13	15	17	19
3 mm	3 mm	8	11	14	17	20	23	26	29
4 mm	3 mm	8	11	14	17	20	23	26	29
5 mm	4 mm	11	15	19	23	27	31	35	39
6 mm	4 mm	11	15	19	23	27	31	35	39
8 mm	6 mm	17	23	29	35	41	47	53	59
10 mm	7 mm	20	27	34	41	48	55	62	69

## Numbering Head (Spring-Locking)

Article group: Customized Numbering Heads  
 Line of goods: Numbering Head (Spring-Locking) / Serial-No 191



- Wheels are secured in place by means of springs
- Direct rotation of all wheels is possible
- Provided with hardened and tempered striking handle or shank
- 12 positions per wheel / engravings acc. to specification
- Display of settings by tell-tale characters in the wheel grooves, indicated by arrows
- All components internally standardised and seperately available
- Manufactured from special high-performance tool steel
- Type of characters acc. to DIN 1451
- Hardness at the engraving: 58–61 HRC
- Nickel-plated version (rust-protected)

Size of character	Wheel Width	Length of impression (mm)							
		3 Wheels	4 Wheels	5 Wheels	6 Wheels	7 Wheels	8 Wheels	9 Wheels	10 Wheels
2 mm	4,3 mm	11,6	15,9	20,2	24,5	28,8	33,1	37,4	41,7
3 mm	4,3 mm	11,6	15,9	20,2	24,5	28,8	33,1	37,4	41,7
4 mm	5,8 mm	16,1	21,9	27,7	33,5	39,3	45,1	50,9	58,7
5 mm	5,8 mm	16,1	21,9	27,7	33,5	39,3	45,1	50,9	58,7
6 mm	5,8 mm	16,1	21,9	27,7	33,5	39,3	45,1	50,9	58,7
8 mm	7,8 mm	22,1	29,9	37,7	45,5	53,3	61,1	68,9	76,7
10 mm	7,8 mm	22,1	29,9	37,7	45,5	53,3	61,1	68,9	76,7

## Automatic Numbering Head

**Article group:** Customized Numbering Heads

**Line of goods:** Automatic Numbering Head / Serial-No 192

- Up to 5 wheels will be switched automatically by a mechanical lifting movement
- Provided with hardened and tempered striking handle or shank
- 10 positions per wheel on automatically switched wheels / engraved with numbers 0-9
- Engraving of manual switched wheels acc. to specification
- Display of settings by tell-tale characters in the wheel grooves, indicated by arrows
- All components internally standardised and separately available
- Manufactured from special high-performance tool steel
- Type of characters acc. to DIN 1451
- Hardness at the engraving: 58–61 HRC
- Nickel-plated version (rust-protected)



Size of character	Wheel Width	Length of impression (mm)							
		3 Wheels	4 Wheels	5 Wheels	6 Wheels	7 Wheels	8 Wheels	9 Wheels	10 Wheels
2 mm	4,3 mm	11,6	15,9	20,2	24,5	28,8	33,1	37,4	41,7
3 mm	4,3 mm	11,6	15,9	20,2	24,5	28,8	33,1	37,4	41,7
4 mm	5,8 mm	16,1	21,9	27,7	33,5	39,3	45,1	50,9	58,7
5 mm	5,8 mm	16,1	21,9	27,7	33,5	39,3	45,1	50,9	58,7
6 mm	5,8 mm	16,1	21,9	27,7	33,5	39,3	45,1	50,9	58,7
8 mm	7,8 mm	22,1	29,9	37,7	45,5	53,3	61,1	68,9	76,7
10 mm	7,8 mm	22,1	29,9	37,7	45,5	53,3	61,1	68,9	76,7



Impressive  
durability

[www.heidenpeter.de](http://www.heidenpeter.de)

# Branding Irons

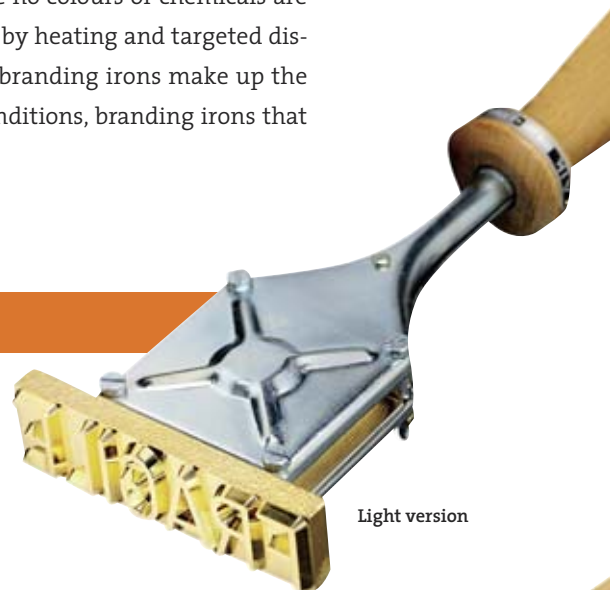
Branding irons are primarily used for the permanent marking of wood. They are also used for labelling pallets, boxes, barrels and also promotional items, toys or art objects. Even on leather and plastic, excellent impression results are attained. The marking is permanent and since no colours or chemicals are required, it is also very environment-friendly. The imprint is only formed by heating and targeted discolouration or deformation (plastic) of the material. Electrically heated branding irons make up the largest portion of the product group. For application under particular conditions, branding irons that can be heated with propane or in open fire can also be supplied.

## Electric Branding Irons

**Article group:** Branding Irons

**Line of goods:** Electric Branding Irons / Serial-No 200

- Fully fitted with heating unit, handle and power cable
- Heating power from 80 W up to 2500 W, optimized for the size of impression and the selected purpose
- Size of character up to 100 mm / Type of characters acc. to DIN 1451
- Also available with branding plates engraved with individual logos or symbols acc. to your requirements
- Impression sizes from 10 x 10 mm up to 500 x 100 mm
- Exchangeable branding plates
- Spare heating elements/resistors are available
- Also available with shank for use in presses or drill stands



Light version



Heavy-duty version

Light version with inserted branding plate

Power	Effective area of branding plates in mm			
80 W	10 x 10	15 x 15	–	–
125 W	30 x 16	35 x 10	25 (round)	–
200 W	50 x 25	35 x 20	35 (round)	–
300 W	70 x 35	90 x 20	45 x 40	50 (round)
400 W	90 x 40	110 x 30	75 x 50	60 (round)

Heavy-duty version with screwed-on branding plate

Height	Length of branding plate in mm/ Power of branding iron			
50 mm	105 / 500 W	125 / 630 W	160 / 900 W	–
50 mm	200 / 1100 W	250 / 1260 W	300 / 1500 W	–
80 mm	105 / 800 W	125 / 1000 W	160 / 1400 W	200 / 1600 W
100 mm	105 / 1050 W	125 / 1200 W	160 / 1450 W	200 / 1800 W
100 mm	300 / 1900 W	400 / 2200 W	500 / 2500 W	–



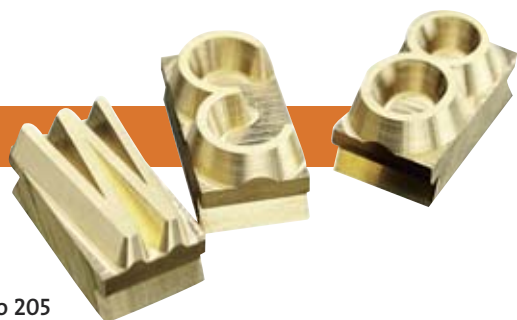
## Electric Branding Type Holder

**Article group:** Branding Irons

**Line of goods:** Electric Branding Type Holder / Serial-No 204

- Perfect for the marking of variable lettering by interchangeable branding types
- Fully fitted with heating unit, handle and power cable
- Heating power optimized for size of character and number of type pieces
- Capacity acc. to your requirements
- Size of character from 5 mm to 50 mm / Type of characters acc. to DIN 1451
- Branding types are secured in place by means of fixable end pieces
- Spare heating elements/resistors are available
- Also available with shank for use in presses or drill stands

## Interchangeable Branding Types



**Article group:** Branding Irons

**Line of goods:** Interchangeable Branding Types / Serial-No 205

- Manufactured from brass / engraved
- For use in branding type holder / serial-no. 204
- Size of character from 5 mm to 50 mm / Type of characters acc. to DIN 1451
- Numbers, letters and punctuation marks are available

## In-Line Power Regulator

**Article group:** Branding Irons

**Line of goods:** In-Line Power Regulator / Serial-No 206

- Stepless adjustable heating power of electric branding irons
- Up to 2000 W continuous power
- Incl. 1,5 m power cable
- Especially recommended for the use of electric branding irons on rubber or plastics







Proven for  
generations

[www.heidempeter.de](http://www.heidempeter.de)



# Stencil Sets (Numbers & Letters)

Stencils are the ideal tools for all markings with colour. The application possibilities range from the simple labelling of storage and transport packaging to the marking of devices, tools and containers and to the labelling of buildings, hall floors and parking spaces. For this purpose, the stencils are brushed, over-rolled or sprayed with a sprayer, then removed and cleaned for re-use. Special stencils with logos, symbols and complete lettering are also deliverable.

## Stencil Sets (Numbers & Letters)

**Article group:** Stencils

**Line of goods:** Stencil Sets / Serial-No 700

- Manufactured from zinc-sheet with the thickness of 0,3 mm
- Resistant and flexible
- Robust and re-useable
- Type of characters acc. to DIN 1451
- Number set 0-9 (10 parts)
- Capital letters up to 150 mm size of character A-Z, & (27 parts), from 180 mm size of character without „&“ (26 parts)
- Lower case letters a-z (26 teilig)





Setting marks  
of permanence!

[www.heidenpeter.de](http://www.heidenpeter.de)

# Impact Presses

Our impact presses are the ideal tools for applications, where a high percussive performance is required in a limited space. They were developed for the long-term industrial use and have a continuously adjustable impact force for an optimal marking result. All models are available for the manual operation or for the pneumatic operation with an additional fitted cylinder. The tool holder can be individually equipped with a machine stamp, a type holder or a numbering head.

## GRAVUREM-Impact Presses

Article group: **Impact Presses**

Line of goods: **Serial-No 400**

Technical Data	FP 600	FP 3000	FP 6000
Impact Force (min. – max.)	200–600 kg	600–3.000 kg	2.000–6.000 kg
Dimensions	130 x 500 x 215 mm	200 x 650 x 312 mm	280 x 1000 x 445 mm
Table Size	100 x 100 mm	160 x 160 mm	220 x 220 mm
Weight (manual operated)	12 kg	34 kg	111 kg
Weight (pneumatically operated)	14 kg	37 kg	123 kg
Max. Spring Deflection	11 mm	24 mm	24 mm
Max. Distance between marking tool and work piece	23 mm	40 mm	44 mm
Min. Distance to the work piece	12 mm	16 mm	20 mm





**GRAVUREM**

Heidenpeter GmbH & Co. KG  
Steel Stamps & Marking Tools

Kenkhauser Str. 6-8  
D - 42929 Wermelskirchen  
Phone: +49 21 96 24 39  
Fax: +49 21 96 8 26 71

[info@heidenpeter.de](mailto:info@heidenpeter.de)  
[www.heidenpeter.de](http://www.heidenpeter.de)

**MASTUS**

HEIDENPETER